

USER MANUAL



CORNER ANCHOR POINT

MANUFACTURER'S DETAILS

Date of manufacture: MM.RRRR

Serial number: NPK_T XXX/MM/RRRR

NPK_L XXX/MM/RRRR

Risk category 3

For one user only

Maximum load allowed – see user manual for the fall absorber used – **100 kg**

Read the manual carefully before use!



Manufacturer's logo

NPK_L
NPK_T

Manufacturer's trade name

1 person
100 kg

Maximum load allowed

NPK_L 000/MM/RRRR
NPK_T 000/MM/RRRR

Serial number /Month and year of manufacture

CE 1463

Number of the notified body responsible for quality control of the manufacturing process

EN 795:2012 class B

Number of the EU standard applicable to the device



An indication to read the user manual before using the device

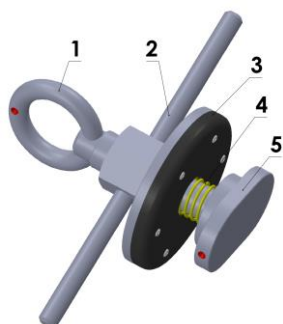


Fig. 1 Corner anchor point with an oval lock NPK_L

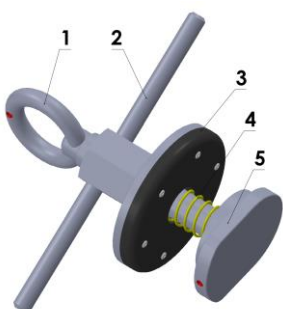


Fig. 2 Corner anchor point with a shield shaped lock tarczy NPK_T

Key parts of the device:

1. Eye of the anchor point
2. Pressure nut
3. Rubber washer
4. Extension spring
5. Lock

THE DESCRIPTION AND DESIGN OF THE DEVICE

The device is designed to protect the worker during the moving and handling of shipping and construction site containers.

The device complies with EN 795B:2012, which means that it is a temporary anchor point installed in a way that prevents accidental disconnection from the structural element to which it is mounted. However, it is possible to disconnect them intentionally from the structure; in this case, at least two separate and consecutive actions without the use of additional tools shall be performed.

Corner anchor points are available in two versions: NPK_L and NPK_T. The anchor points are designed to be installed in the transport slots located at the corners of the container. The anchor points are designed to be installed in transport slots located at the corners of containers according to ISO 1161..

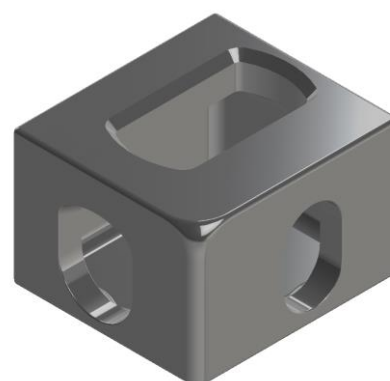


Fig. 3 Container corner according to ISO1161

Address:
Krolewska 94/11
30 - 079 Krakow



Contact us on:
office@rockmaster.eu
+48 12 290 30 35

GENERAL RULES FOR USING PROTECTIVE EQUIPMENT FOR SAFE WORK AT HEIGHT

Introduction

- Fall protection equipment should only be used by persons in good health and shape, with no contraindications to performing work at height and who have been adequately trained by a competent and authorized representative of the manufacturer.
- Fall protection equipment should only be used as indicated and designed.
- The incorrect use or incorrect combination of fall protection equipment can cause severe personal injury or death.
- It is strictly forbidden to modify the device or tamper with it. Any such action shall void the warranty.
- All repairs must be undertaken only by the manufacturer or by persons authorized by said manufacturer.
- Before commencing work using fall protection equipment it is essential that a rescue procedure, and, first and foremost, an adequate set of rescue equipment are in place.
- Work using fall protection equipment is to be carried out only under the guidance of a competent supervisor.

Using the device

- Before commencing work, the user has to:
 - read the user manual carefully
 - learn (and train) all basic rescue procedures and techniques
 - check the condition of the device (all parts working correctly, no damage, no wear and tear, no corrosion/rust, no abrasions) and the correct assembly of all parts of the system as well as whether all parts fulfill the requirements of corresponding standards. The technical condition of all parts of the protection system is to be checked upon completing work as well
 - check, whether parts of the system do not interfere with one another
- It is forbidden to use the equipment if any of the parts does not work correctly
- The only allowed PPE for fall arrest are harnesses according to EN 361
- It is only allowed to attach the fall absorbing lanyard to the harness at the connection point marked with the capital A.
- While working with fall protection equipment, proper anchor points according to EN 795 have to be used; there has to be sufficient space below the worker, exceeding the length of fully deployed fall absorber.
- The fall protection system should be fitted and fastened in a way that reduces the risk of falls and/or their potential length to a minimum. There has to be sufficient space below the worker. Also the distance required for fall absorption (the length of the deployed fall absorber) and the fall distance have to be considered.
- Exercise caution while working in difficult or demanding conditions: avoid extreme temperatures and weather as well as caustic substances.
- After a fall has been arrested, the device is to be retired! A device that has been retired is to be destroyed!, i.e. rendered non-usable.
- If there are any doubts about the technical condition of a piece of equipment, it should be retired. Such a device can be reused only after a full inspection has been carried out by the manufacturer and a written approval has been issued.

Inspection and maintenance

- The device functioning correctly is crucial to preserving the user's health and safety; therefore, regular inspections are necessary.
- An inspection is to be carried out at least once per year (at least every 12 months). An inspection can be carried out by a competent authorized person; for more complex devices, an inspection is to be carried out by the manufacturer or a person authorized by the same in writing. Check the technical condition of the device as well as the function and all the markings, which need to be clearly visible. If the result of the inspection is unsatisfactory, the device should be retired.
- All information in regard to the equipment, including the periodic inspection results, shall be recorded in its designated logbook by the persons responsible for storing and maintenance. It is forbidden to use any equipment if its corresponding logbook has not been maintained properly and/or does not contain crucial information, if documents are missing or incomplete or if the equipment's history is unclear/unknown.
- The equipment's lifespan depends on environmental conditions, any harmful factors present, the intensity of use, and storage conditions.
- The lifetime of metal parts is not limited, as long as regular periodic inspections are carried out and recorded by competent persons.
- A device is to be retired if the maximum lifetime given by the manufacturer has been exceeded.
- The manufacturer can retroactively change the lifetime of a specific type of product and publish this information eg. on their website.
- To clean the device, wash it with clear, lukewarm water (up to 30°C), using a soft wipe; for more persistent dirt, use natural soap. Leave the device to dry in room temperature.
- The device can be sanitized using spray disinfectants. Środków w aerozolu
- Only silicon-based spray grease can be applied to metal devices, if needed. Any excessive grease on the surface touching the container can be removed using a clean wipe.

Storage and transport

- To ensure the longevity of equipment, when not in use, store it in its original packaging in a dry, ventilated place, at room temperature.
- Make sure to avoid exposure to dust and salty environments, high temperatures, harmful and corrosive substances, abrasive and sharp surfaces and edges when storing and transporting the equipment.
- Do not leave the equipment out where it is directly exposed to sunlight

DETAILED INSTRUCTIONS FOR USE

The corner anchor points were designed to be used as access points or anchor points using transport slots located at the corners of containers..

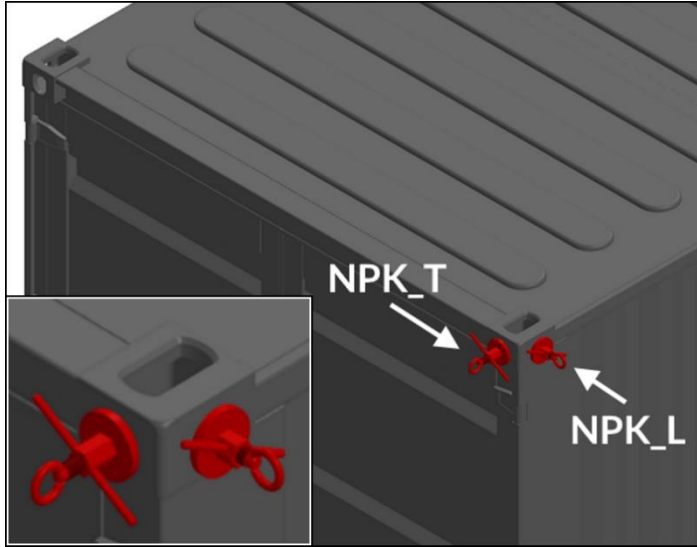


Fig. 4: Placement of the corner anchor points NPK_T and NPK_L in corner slots

Container corners feature 2 types of transport slots: oval or shield-shaped.



Fig. 5 Side slots on container corners

Since the slots at container corners come in different shapes, two different versions of the corner anchor point have been developed: NPK_L – for oval slots, NPK_T for shield-shaped slots.

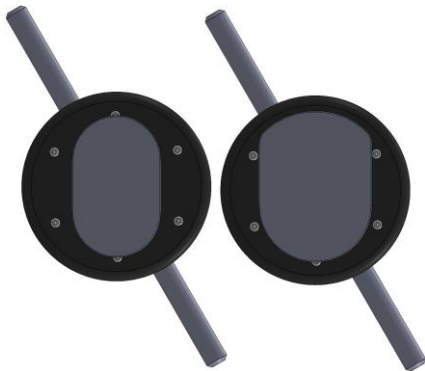


Fig. 6 From the left: NPK_L & NPK_T

Before use, familiarize yourself with the below information on the correct handling of the corner anchor point.

The detailed instructions for use complement the general instructions for use of fall protection equipment and/or build on them.

The anchor point for containers can be used in combination with other parts and devices to create a full fall protection system.

Scope of use:

Applicable standard: The anchor device conforms to EN 795B:2012

Load limit: one person

Maximum weight of user: 100 kg

Allowed temperature range: -30°C ÷ +50°C

NOTE:

Each piece of equipment should be accompanied by a set of instructions for its use, maintenance and periodic inspections and repairs in the language of the future user's country.

Lifetime and inspections

Standard wear and tear is to be expected when the device is used as designed and not exposed to any harmful environmental factors.

The lifetime of the device is not limited as per manufacturer's instructions, as long as regular recorded inspections by competent persons are performed.

The device should be inspected before and after every use by the user.

That notwithstanding, the device has to be inspected at least once every 12 months.

The inspection is to be carried out by the manufacturer or a person authorized by the same in writing and is to follow the checklist provided by the manufacturer.

If a fall has been arrested, the anchoring device is to be retired immediately.!

Installation:

- Before commencing work at height, the user of the NPK corner anchor point has to don a proper fall arrest harness that has both a sternal as well as a dorsal attachment point according to EN 361 and a central attachment point according to EN 813.

Recommended PPE:
SRL

An energy absorber attached to the dorsal attachment point using a maillon connector:



Fig. 7 PPE setup for work using NPK corner anchor points

INSTALLING THE NPK CORNER ANCHOR POINT

- Choose the correct type of NPK corner anchor point for the slot available
- The anchor points can be installed before the containers are stacked on top of one another (eg. while constructing a multistorey structure)
- Place the lock of the NPK in the slot of the container corner (fig. 8). The red dot should be visible looking from the top or the bottom of the container while the lock is being inserted. In the case of NPK_T for shield-shaped slots, put the lock in at an angle, tilting the device towards the container wall (fig. 9)..

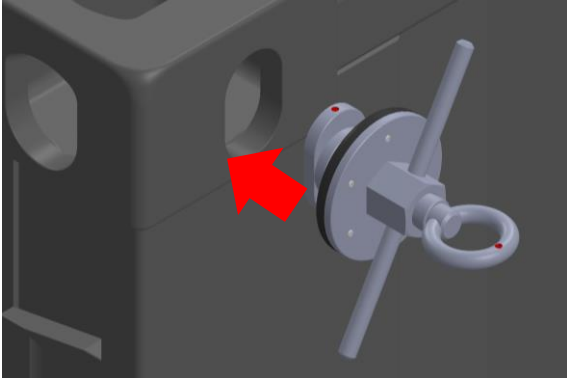


Fig. 8 Installing an NPK_L lock in the oval slot of a container corner

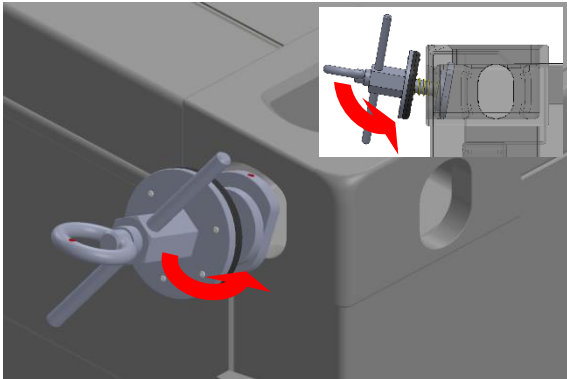


Fig. 9 Installing an NPK_T lock in the shield-shaped slot of a container corner

- Turn the lock by 90° (fig. 9). When locked, the eye of the NPK is positioned vertically and the red dot position indicators are visible when looking from the side (not from the top or bottom of the container) – fig. 10..

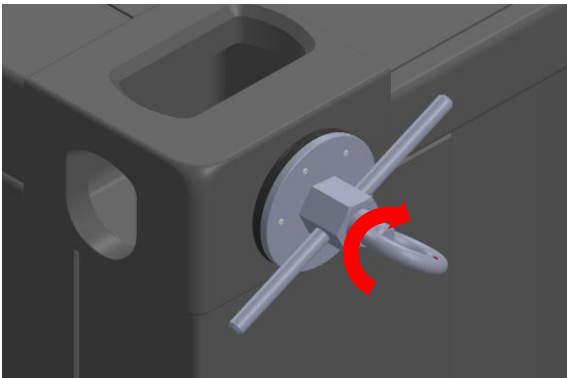


Fig. 9 Turning the NPK to lock it in the container slot

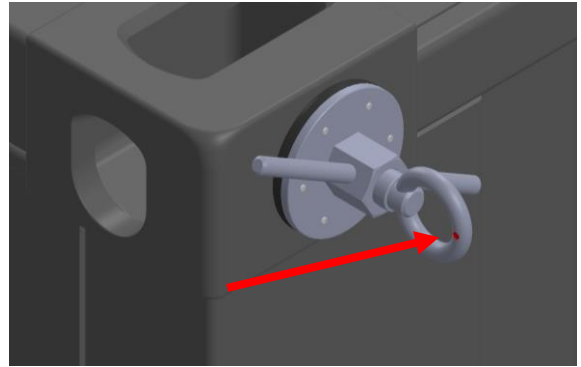


Fig. 10 NPK locked

- When the NPK is locked in the slot, tighten the pressure nut so far that the rubber washer is pressed against the container wall.

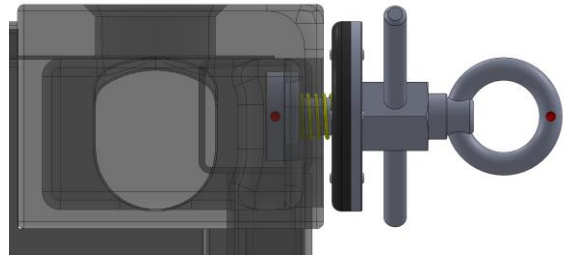


Fig. 11 NPK before the pressure nut is tightene

- Tighten the pressure nut using the connected rods (fig. 12).

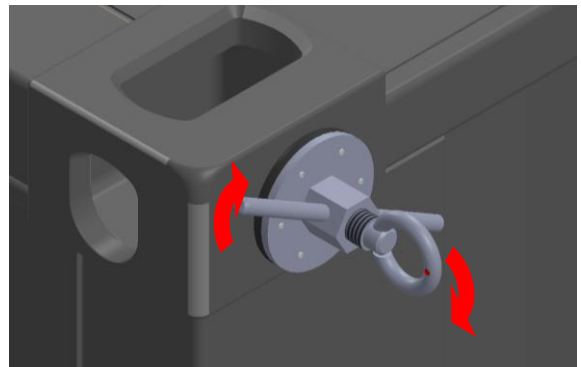


Fig. 12 Tightening the pressure nut on the NPK

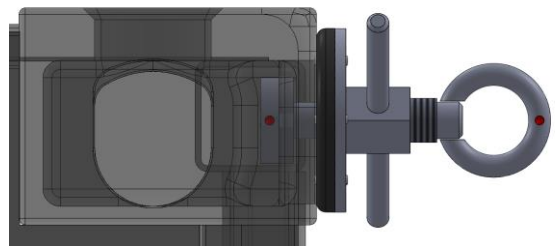


Fig. 13 NPK after the pressure nut has been tightened

Using a self-retracting lanyard as belay device:


- Attach the self-retracting lanyard to the anchor point; the SRL must be long enough to allow for climbing from ground level to the desired height
- Put a slim accessory cord on the connector at the end of the SRL cable, so that it's possible to bring it down to the operator before commencing work. The accessory cord makes it possible to roll out the SRL cable to attach it to the operator's harness. Do not leave the cable of the SRL hanging loose; it might damage the spring and, in turn, impair the function of the device.

CORNER ANCHOR POINT – USER'S LOGBOOK

The owner and sole user of the equipment is responsible for keeping to logbook updated and complete. Before the equipment is first issued, the logbook should be completed by the person responsible for stock keeping with all necessary information in regard to the equipment (name, type, serial number, date of purchase, catalogue number, the manufacturer's name). Information on periodic inspections is entered by the manufacturer or their authorized representative.

NOTE:

It is forbidden to use any PPE for which no logbook is present or is incomplete.

DEVICE NAME:	
TYPE:	SERIAL NUMBER:
MANUFACTURED BY:	
 <b style="font-size: 1.2em; font-weight: bold;">ROCK MASTER <small>SAFE WORK AT HEIGHT</small>	
DATE OF MANUFACTURE:	FIRST USED ON:
DATE OF PURCHASE:	LAST USED ON:

INSPECTION AND REPAIR HISTORY					
No.	DATE	REASON	RESULT	DATE OF THE NEXT INSPECTION	INSPECTION CARRIED OUT BY (SIGNATURE)
1					
2					
3					
4					
5					
6					
7					
8					
9					
10					

CORNER ANCHOR POINT - WARRANTY CARD

THANK YOU FOR PURCHASING A ROCK MASTER PRODUCT

Congratulations on the purchase of your new equipment. Please remember that to enjoy it safely and for a long time it is crucial to use it correctly, according to its design and purpose.

Should you need to use services covered by the warranty, please get in touch directly with the manufacturer or with a customer service and/or repair shop authorized by the manufacturer.

Before reaching out for service, please read the manual carefully.

DEVICE NAME:

TYPE:

SERIAL NUMBER:

MANUFACTURED BY:



DATE OF MANUFACTURE:

DATE OF PURCHASE

WARRANTY PERIOD:

12 months from purchase, until:

WARRANTY CONDITIONS

1. Rock Master sp. z o.o. sp. k. provides a 12 month warranty for the correct function of the device, starting from purchase.
2. The warranty only covers manufacturing faults.
3. Any fault discovered should be reported to the manufacturer or to a customer service and/or repair shop authorized by the manufacturer.
4. The manufacturer guarantees that any faults discovered during the warranty period will be checked at no cost and removed at no cost within 14 or 21 days since they were reported. The warranty period is extended by the time needed for repairs.
5. In case of any complaints, it is only possible to replace the faulty product if the repairs undertaken are unsuccessful and the manufacturer deems the product impossible to repair.
6. The warranty card is only valid together with proof of purchase and is the only basis for any warranty service.
7. When purchasing, you declare to have read and accepted the warranty conditions.

NOT COVERED BY THE WARRANTY

1. The product is to be used only as designed, any other use is not covered by the warranty.
2. Any repairs by unauthorized persons, tampering or modifications void the warranty.
3. Any normal wear and tear (scrapes, scratches, slight chafing of the protective or decorative coating) is not covered by the warranty.
4. The warranty does not cover normal maintenance work required for the device to function properly or inspections necessary during the warranty period.

REPAIRS

DATE OF REPORT	DATE OF REPAIRS	REPAIRS UNDERTAKEN AND/OR PARTS REPLACED	SERVICE CENTRE - SIGNATURE AND STAMP

Address:
Krolewska 94/11
30 - 079 Krakow



Contact us on:
office@rockmaster.eu
+48 12 290 30 35