

CONTAINER ACCESS SYSTEM



CONTAINER ACCESS SYSTEM

LADDER INTEGRATED WITH ANCHOR LINE TO BE MOUNTED TO CONTAINER CASTINGS

CHARACTERISTICS

Container access system consists of modular ladders which are meant to be mounted into holes of container castings.

Modular ladder is integrated with vertical anchor line, anchor points and exiting post. All these elements provide continuity of protection while moving on different levels of construction containers.

System was designed in conformance with EN795B and DIN18799-2 standards.

Thanks to their modularity ladders can be connected with each other to give protection on a multistore construction sites. Intermediate anchor points (mounted to side holes of container castings) provides further support when climbing and installing following modules.

Upper module is meant to be installed on a top container, and is designed to be used with exiting post.

Exiting post can be used as a separate anchor point or as a part of horizontal lifeline (lifeline installed between two exiting posts) to give protection during work on a roof of container.

Rungs and main rail are made of aluminium to save weight. Because of their lightness modular ladders are convenient to use and do not require any winch or crane to mount them.

Mounts ensure perfect fitment to the container castings. After inserting locking part of the mount in a hole of a casting you will only need to rotate locking mechanism 90 degrees. Positioning and locking does not require climbing on the ladder. It is performed by pulling pilot wire which rotates locking mechanism in place. After positioning mount has to be tightened by turning lever.

Vertical anchor line is a 8 mm and it can be used with any fall arrester.

Both intermediate and ladder anchor points can be used to work on height and to install following modules.

Neck in exit post helps to dissipate energy when fall occurs. It protects both worker and construction. We performed internal tests of the system and we are waiting for certification process.




PATENTED
OPATENTOWANE

TECHNICAL INFO

STANDARD:

DIN18799-2
EN795B to be certified

MATERIAL:

aluminium,
steel, rubber

**PACKAGE
DIMENSIONS:**

2,8x0,4x0,25m – lower mod.
3,2x0,4x0,25m – upper mod.
1,2x0,3x0,05m – exit post

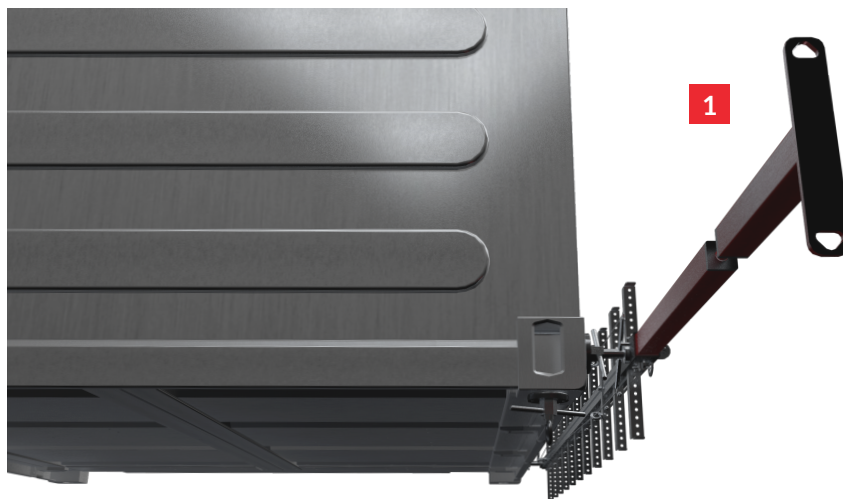
WAGA:

18 kg – lower mod.
19 kg – upper mod.
4,5 kg – exit post

OTHER:

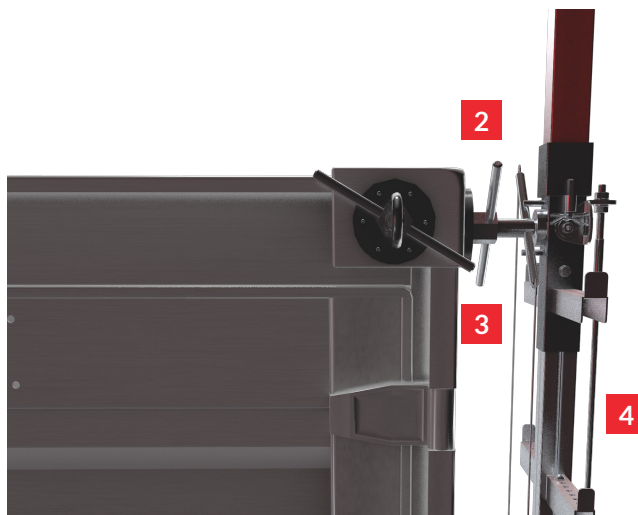
compatible
with TRACKER

Top view



1 Exit post anchor point

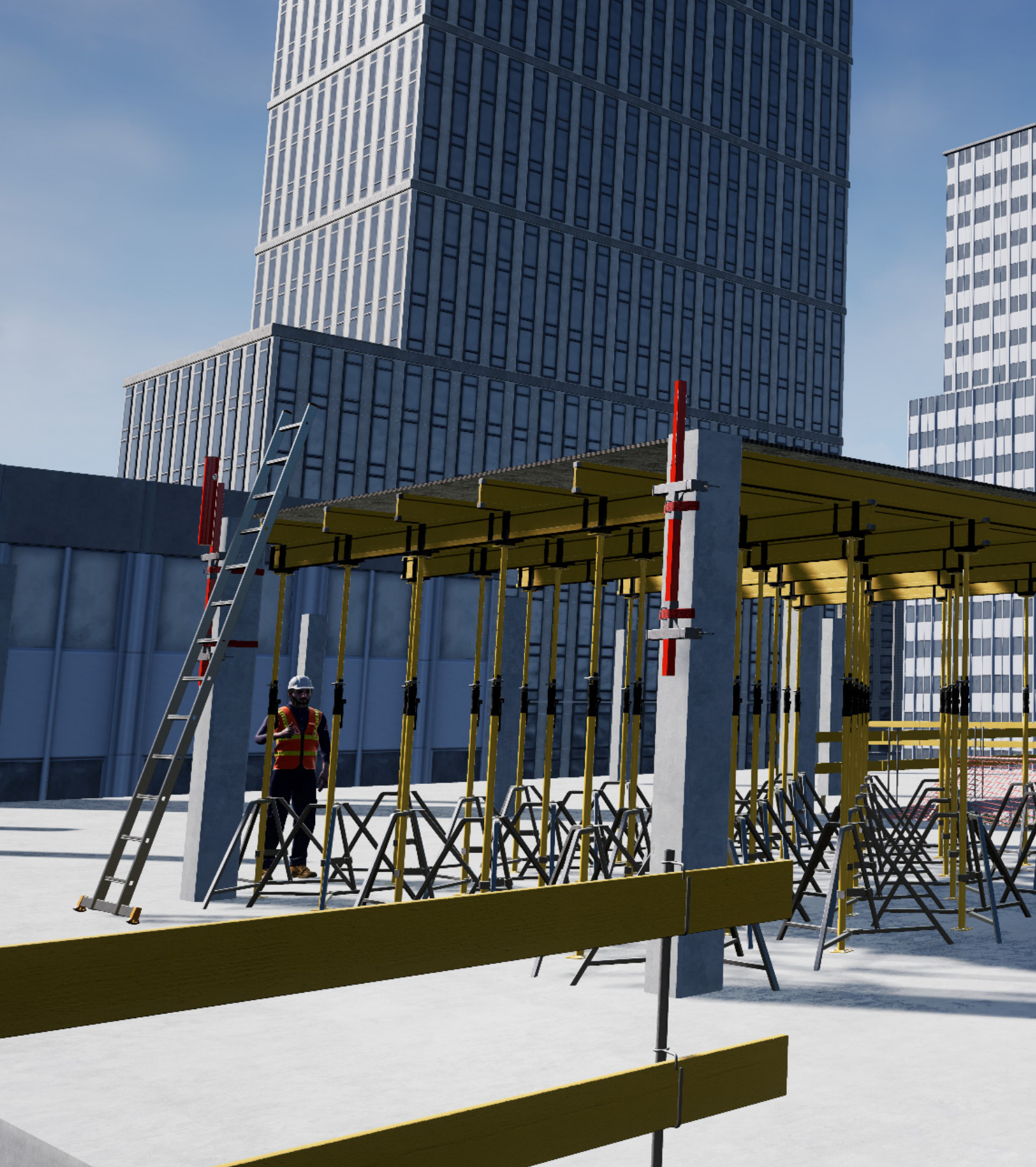
Side view



2 Ladder mount with locking mechanism

3 Pilot line

4 Vertical anchor line



ROCK MASTER

CBR Rock Master Sp. z o. o. Sp. k.
ul. Królewska 94/11, 30-079 Kraków,
tel. +48 12 290 30 35;
e-mail: office@rockmaster.eu
NIP: 945-18-44-489

Centrum Badań i Rozwoju
ul. Sportowa 20, 32-083 Balice,
e-mail: cbr@rockmaster.eu

www.rockmaster.eu